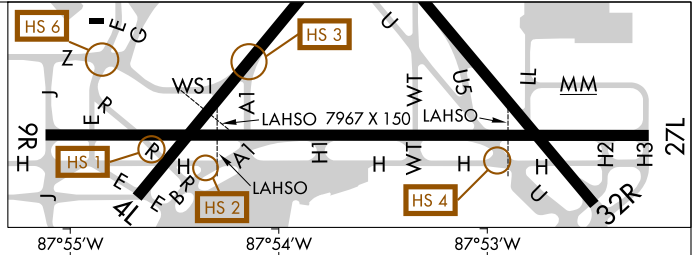


AIRPORT DIAGRAM

AL-166 (FAA)

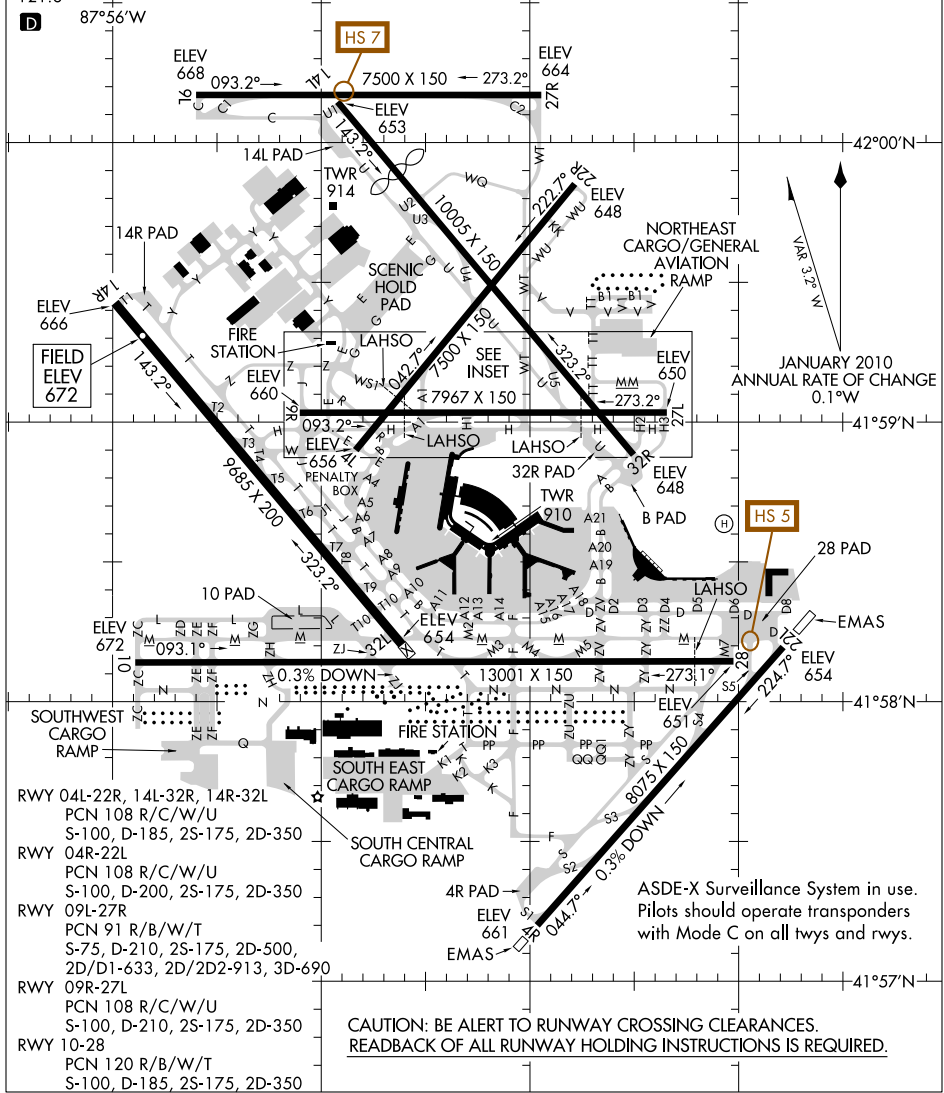
CHICAGO-O'HARE INTL (ORD)
CHICAGO, ILLINOIS

ATIS
135.4 282.225
O'HARE TOWER
128.15 (RWY 09L-27R)
O'HARE TOWER CENTER
120.75 126.9 132.7 348.0
GND CON TOWER NORTH
124.125
GND CON TOWER CENTER
121.75 226.675 (OBND)
121.9 226.675 (IBND)
CLNC DEL
121.6



EC-3, 31 MAY 2012 to 28 JUN 2012

EC-3, 31 MAY 2012 to 28 JUN 2012



RWY 04L-22R, 14L-32R, 14R-32L
PCN 108 R/C/W/U
S-100, D-185, 2S-175, 2D-350

RWY 04R-22L
PCN 108 R/C/W/U
S-100, D-200, 2S-175, 2D-350

RWY 09L-27R
PCN 91 R/B/W/T
S-75, D-210, 2S-175, 2D-500,
2D/D1-633, 2D/2D2-913, 3D-690

RWY 09R-27L
PCN 108 R/C/W/U
S-100, D-210, 2S-175, 2D-350

RWY 10-28
PCN 120 R/B/W/T
S-100, D-185, 2S-175, 2D-350

CAUTION: BE ALERT TO RUNWAY CROSSING CLEARANCES.
READBACK OF ALL RUNWAY HOLDING INSTRUCTIONS IS REQUIRED.

ASDE-X Surveillance System in use.
Pilots should operate transponders
with Mode C on all twys and rwys.

AIRPORT DIAGRAM

CHICAGO, ILLINOIS
CHICAGO-O'HARE INTL (ORD)